

Warringah Cranes and Transport

Crane Fleet

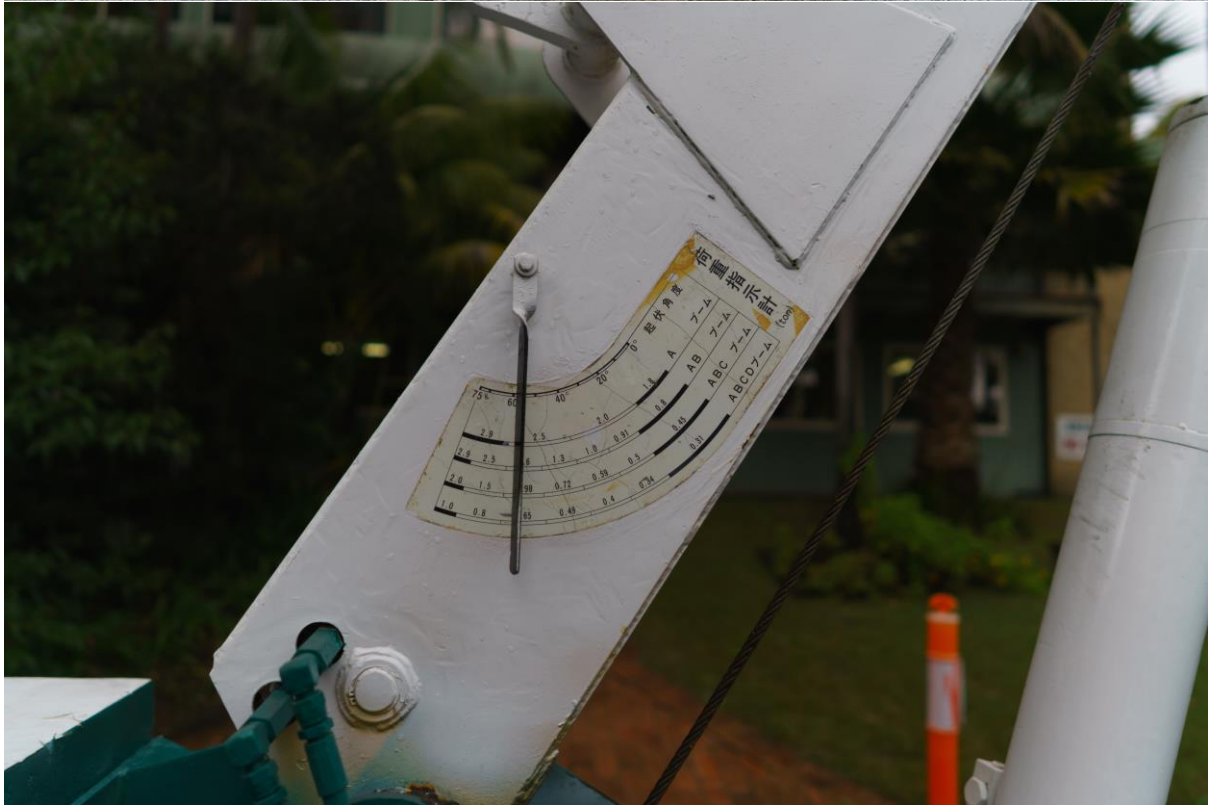
Brand	TOA
Model	TC304HAL
Capacity	2.9 ton
Year	
Rego	N/A
Last Major Inspection	
Hours	1971
Kilometres	N/A



Recently repainted and fitted with new wire and tracks.





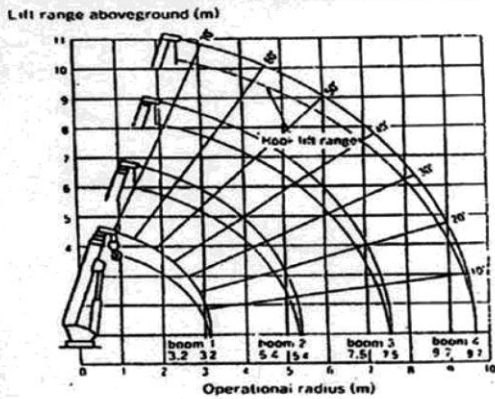


TC-304 HAL

Special features

- Airborne transportation
- Temporary bridge
- Rough terrain
- Tunnel
- Mountain

RATED LOAD DIAGRAM TC-304HAL



BOOM A OR B CAPACITY

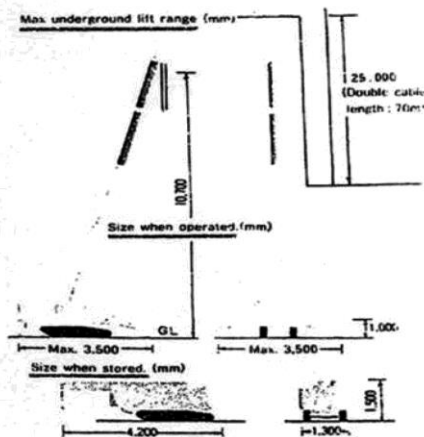
RADIUS (M)	2.0	2.5	3.0	3.5	4.0	4.5	4.9
S.W.L (TON)	2.88	2.90	2.3	1.75	1.4	1.15	1.05

BOOM A, B, & C CAPACITY

RADIUS (M)	3.0	3.5	4.0	4.5	5.0	5.5	6.0	6.5	7.0
S.W.L (TON)	2.3	1.75	1.4	1.15	1.0	0.82	0.74	0.82	0.52

BOOM & A, B, C, & D CAPACITY

RADIUS (M)	3.0	4.0	5.0	6.0	7.0	8.0	9.0	9.2
S.W.L (TON)	1.1	1.1	1.0	0.74	0.52	0.41	0.35	0.34



PERFORMANCE	
Rated Load	2,900kg
Max. Radius	9.7m
Max. Lift Range aboveground	10.7m
Max. lift range underground	GL-29.0m (double cable)
WINDER	
Hoist winch	Hydraulic motor spur gear reduction
Cable	6 X 37 normal-z 9mm
Cable Length	Standard 60m, max 70m
No. of Cables	Quadruple
Winding Speed	8.6m/min
Hoist Brake	Mechanical brake
EXTENSION/RETRACTION DEVICE	
Boom Length	3.0 - 9.7m
Boom Stage	4
Extension/retraction method	2-stepped by hydraulics
Extension/retraction stroke	4.5m
Extension time	30sec/4.5m
HEAD-UP/DOWN DEVICE	
Boom elevation method	Direct hydraulic cylinder pressure
Boom elevation Angle	0-75°
Time for full angle	17sec
ROTATOR	
Turning method	Hydraulic cylinder pressure
Slewing angle	Non-step 360 deg.
Slewing Speed	1r/min
OUTRIGGER	
Autvigen method	Manual extraction engagement warm gear reduction
SAFETY DEVICE	
Safety equipments	Load meter Boom angle gauge
Hydraulic safety device	Relief valve
Automatic lock device	Counter balance valve pilot check valve
Anti-over wind	By a plumb type of buzzer

ENGINE	
Engine	Diesel engine zb600c-i
Power	13ps/3,200rpm
TRANSMISSION	
Clutch	Belt tension type
Steering gear	Inner expansion brake skid steer
Brake	Inner expansion shoe & drum
Transmission	Forward/backward 3-shifts
SPEED	
1 st speed	0.8km/h
2 nd speed	1.2
3 rd speed	2.2
Hill climbing ability	20°
TRACK	
Trank shoe	Rubber crawler
Track width	250mm
Length on ground	2,000(1,550)mm
Pressure to ground	0.33kg/cm ²
Weight	2,750kg
DIMENSION	
Length	4,200mm
Width	1,300mm
Height	1,500mm
HYDRAULICS	
Hydraulic pump	Gear pump
Relief pressure	210kg/cm ²
Oil quantity	60l